

SURFACE TRANSPORTATION BOARD
Office of Economic and Environmental Analysis
REPORT OF RAILROAD EMPLOYMENT - CLASS I LINE-HAUL RAILROADS

This statement furnishes current employment data trends for class I line-haul railroads.

PART 1. Number of Employees

	Number of Employees		% of Change From	
	August 2010	August 2009	August 2009	July 2010
Total - All employees	152,925	1.91%	-0.08%	
Executives, officials, and staff assistants	9,112	-1.84%	1.02%	
Professional and administrative	13,969	3.54%	-0.21%	
Maintenance of way and structures	34,826	-1.02%	-0.49%	
Maintenance of equipment and stores	28,044	-0.74%	0.02%	
Transportation (other than train and engine)	6,612	-1.09%	1.07%	
Transportation (train and engine)	60,362	5.59%	-0.14%	

PART 2. Indexes of employment

Index, same month 1967 = 100

Index, year 1967 = 100*

	2010	2009	2008		2010	2009	2008
January	23.9	25.9	26.5	January	24.1	26.2	26.7
February	24.2	25.7	26.7	February	24.2	25.8	26.8
March	24.5	25.5	26.8	March	24.5	25.4	26.8
April	24.7	25.2	26.9	April	24.8	25.3	27.0
May	24.6	24.7	26.9	May	24.8	24.9	27.1
June	24.3	24.0	26.2	June	24.9	24.6	26.8
July	24.6	24.1	26.4	July	25.1	24.7	27.0
August	24.7	24.2	26.5	August	25.1	24.6	27.0
September	0.0	24.6	26.8	September	0.0	24.5	26.6
October	0.0	25.0	27.5	October	0.0	24.5	26.9
November	0.0	24.8	27.5	November	0.0	24.1	26.7
December	0.0	24.9	27.3	December	0.0	24.1	26.4

* Average of 12 months, 1967 = 100

Source: Monthly Report of Number of Employees submitted by Class I Railroads.
These reports have not been verified by the Surface Transportation Board.

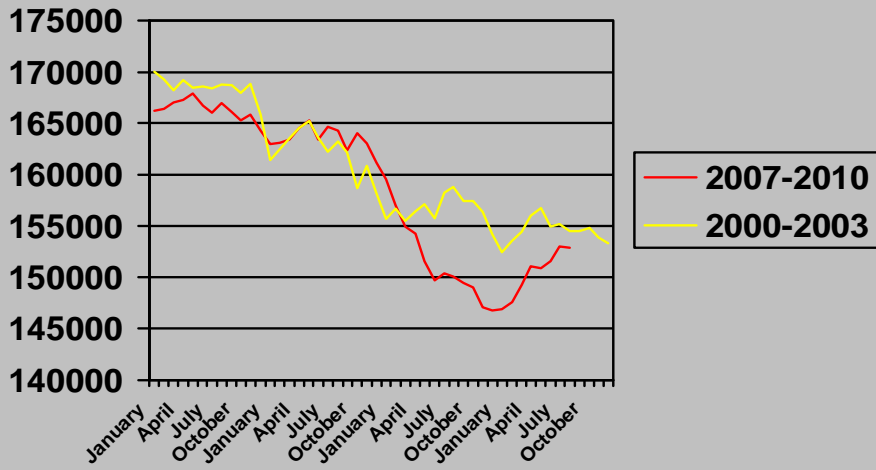
CARRIER		L 100	L 200	L 300	L 400	L500	L600	TOTAL
August 2010								
BNSF	130500	1,838	3,690	8,576	6,898	1,431	14,771	37,204
CSX	121500	1,170	3,270	6,146	4,901	1,767	11,005	28,259
CN/GT Corp	114900	361	494	1,893	795	400	2,346	6,289
(Includes all CN US Operations)								
KCS	134500	287	345	454	365	83	1,206	2,740
NS	117100	1,820	2,685	6,006	5,448	1,389	10,787	28,135
SOO	137700	227	432	1,130	545	178	1,370	3,882
UP	139400	3,409	3,053	10,621	9,092	1,364	18,877	46,416
TOTAL		9,112	13,969	34,826	28,044	6,612	60,362	152,925
NRPC	103000	1,422	4,827	2,931	4,921	2,862	3,460	20,423

	August 2010	August 2009	July 2010	% Change	
				Year	Month
L 100	9,112	9,283	9,020	-1.84%	1.02%
L 200	13,969	13,491	13,999	3.54%	-0.21%
L 300	34,826	35,185	34,998	-1.02%	-0.49%
L 400	28,044	28,253	28,039	-0.74%	0.02%
L500	6,612	6,685	6,542	-1.09%	1.07%
L600	60,362	57,167	60,448	5.59%	-0.14%
TOTAL	152,925	150,064	153,046	1.91%	-0.08%

	1967 Months	2010 Months	Ratio Corresp. Months	Ratio Average Month
January	614,766	146,890	23.9	24.1
February	610,335	147,617	24.2	24.2
March	608,751	149,240	24.5	24.5
April	611,136	151,088	24.7	24.8
May	613,824	150,915	24.6	24.8
June	624,153	151,527	24.3	24.9
July	623,096	153,046	24.6	25.1
August	619,419	152,925	24.7	25.1
September	606,714	0	0.0	0.0
October	597,271	0	0.0	0.0
November	593,568	0	0.0	0.0
December	590,100	0	0.0	0.0

Source: Monthly Report of Number of Employees submitted by Class I Railroads.
These reports have not been verified by the Surface Transportation Board.

Class I Railroad Employment



Class I Railroad Workforce

